



21

*Cypress*

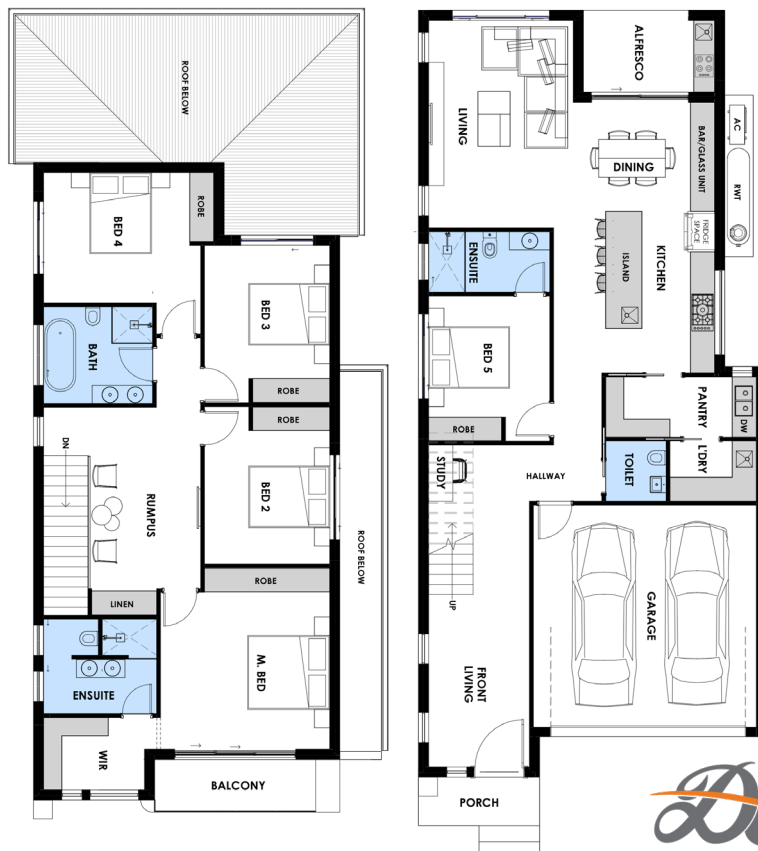


### FEATURES

- ✓ Fully Ducted Air Conditioning with 4 Zones
- ✓ 600x1200mm Tiles Floor
- ✓ Hybrid Timber Floor to Bedrooms
- ✓ Tiles Floor To Ceiling In Bathroom & En-Suite.
- ✓ 60mm Engineered Stone Benchtops In Kitchen Area.
- ✓ Westinghouse 900mm Stainless Steel Appliances.
- ✓ Electric garage door opener with two (2) remotes.
- ✓ 1200mm Front Door.
- ✓ LED Light To Kitchen Island Bench.
- ✓ Video Intercom with COLOUR MONITOR.

### DETAILS

Master Bed	4.2x4.7m
Bed 1	4.0x3.9m
Bed 2	3.3x3.1m
Bed 3	3.3x3.1m
Bed 4	3.2x3.6m
Bed 5	3.0x3.0m
Living	5.1x3.6m
Dining	2.7x3.7m
Kitchen	2.8x3.7m
Alfresco	3.5x2.1m
Porch	3.00x1.2m
<b>Total</b>	<b>270.00m<sup>2</sup></b>



*DCH*



admin@dchnsw.com.au



0405 DCH DCH(324 324), 0405 638 206



www.dchnsw.com.au